



Galley Common Infant School NEWSLETTER

Issue 23
March 2025

Dream, Believe, Achieve

STARS OF THE WEEK

The following children were chosen as "Star of the Week"

Class 1 - Ava-Mae + Aria-Jae Class 2 - Eva + Ava
Class 3 - Yunus + Hugo Class 4 - Bella + Willow
Class 5 - Beau + Teddy Class 6 - Millie + Joseph



ATTENDANCE

Well done to Class 5 who have achieved 98.6% attendance this week.

Class 1 - 92% Class 2 - 82.61%
Class 3 - 95.19% Class 4 - 92.8%
Class 5 - 98.6% Class 6 - 96.55%



Our DfE target is 96%
Whole School Attendance this week is 93.35%

School News

Coffee Morning - please come along to our coffee morning on Thursday 13th March at 9am where we will have RISE available to speak to for an open discussion.



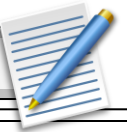
World Book Day - took place yesterday and the children looked fantastic in their costumes! We hope they had a lovely day.



School Photographs - the school photographer will be in school on Wednesday 12th March taking class photographs. Children should wear their school uniform for the photographs, no PE kits to be worn on this day please.



DIARY DATES



March	
Weds 12 th	Class Photographs
Thurs 13 th	RISE Coffee Morning 9am
Fri 21 st	Easter Film Night (KS1) Comic Relief
Mon 24 th	Y2 Mother's Day Assembly 9am
Tues 25 th	Y1 Mother's Day Assembly 9am
Weds 26 th	YR Mother's Day Assembly 9am
Fri 28 th	Non-Uniform Day for Easter Egg Donations
April	
Fri 4 th	Class 3 Assembly 2:30pm Easter Bingo
Mon 7 th	OAP Assembly 10am
Tues 8 th	Helpers Assembly 9am
Fri 11 th	Last Day of Term

Teacher Training Dates:
2/6/2025
21/7/25

[Warwickshire School Term Dates 24/25](#)

Reading in School Week - thank you to everyone who came along. We hope you found it informative and enjoyed the activities with your child.



Our School Rules

1. Listen Carefully
2. Take Care
3. Try your best





Lateness - Could we please remind parents that school begins at the following times:

8.40am for Reception children and **8.45am** for children in KS1.

Please be on time.

The school gates will be locked at 8.50am. If your child arrives at school after this time, please go to the school office. You will then be asked to complete a late log form.

Children who are consistently late will be contacted by Mrs Salmon, our Learning Mentor to see if there is any way that we can support you and your child in getting to school on time. Thank you for your support.

Optional key stage 1 national curriculum tests: information for parents - GOV.UK

<https://www.gov.uk/government/publications/optional-key-stage-1-national-curriculum-tests-information-for-parents>

Our school has once again signed up to the Safe and Active Schools Programme 2024-2025. As part of the programme all children will be receiving age-appropriate road safety sessions, and we will also be participating in and promoting active travel.

We recognise how important messaging is for our children. Your children copy your actions, and your behaviour serves as a powerful role model. We would like to ask all our families to model the safest behaviours near the road for children to copy and make good choices around travelling actively on the school run.

We will be sharing messages and ideas from the Safe and Active Schools team and further information about the children's road safety learning in school throughout the year.

For further information about road safety and active travel you can follow or contact the road safety education team.

X (previously Twitter) - **@WCCSafe_Active**
 Facebook - **@WCCSafeActiveTravel**
 Email - **roadsafetyeducation@warwickshire.gov.uk**



Junior Road Safety Officers:

Class 3 - Daniel	Class 4 - Jesse
Class 5 - Teddy	Class 6 - Millie

School Uniform



At Galley Common Infant School, we take pride in our school uniform.

Below are just a few reminders about our school uniform expectations.

Ankle boots should not be worn. The correct school uniform requirement is that children should wear sensible **black shoes**.

Jewellery other than stud earrings is not allowed. Children who do wear stud earrings must tape these up or remove them on PE days.

Nail polish should not be worn by children at school. Could you please ensure that all nail polish is removed before coming to school.

Tattoos - Please ensure tattoos are removed for school.

Toys in School - Please do not allow your child to bring in any toys to school, unless permission has been given by a member of staff.

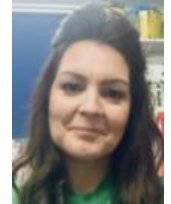
On PE days children should wear a black tracksuit and yellow PE shirt during the winter months and in the summer months blue shorts and a yellow shirt should be worn.

We do hope that you will support us by ensuring that your child continues to wear the appropriate school uniform. Thank you.

SAFEGUARDING

"The safety of the child is the first and paramount consideration"

Child protection concerns - If you have any child protection concerns, or wish to raise any issues, please feel free to call into school and speak to Mrs Middleton, Mrs Newman, or Mrs Salmon. You can also email safeguarding2107@welearn365.com You can also speak to a member of the Social Care Emergency Duty Team on 01926 886922.



Packed Lunches - Could we please remind parents that we are a NUT FREE school. Please do not send children to school with anything containing nuts. Thank you.

The Highway Code / School Keep Clear Signs / Zig-Zags/ Double Yellow Lines:

Warwickshire Road Safety Partnership would like to remind parents of The Highway Code. The Highway Code states: "You MUST NOT wait or park, or stop to set down and pick up passengers, on school entrance markings." (Highway Code rule 238, Road Traffic Regulation Act 1984.)

School Keep Clear markings mean no stopping during the time and days specified on adjacent or nearby signs. The markings help prevent vehicles from parking near or in front of school entrances, to ensure safe access for children and parents.

Please park safely, legally and considerately and away from the school gates.

Weekly Menu

Week one

Warwickshire, Coventry: 16/9, 7/10, 18/11, 9/12, 13/1/25, 3/2, 3/3, 24/3
Oxfordshire: 16/9, 7/10, 18/11, 9/12, 13/1/25, 3/2, 3/3, 24/3

MONDAY

Choose a main meal...
Pork Meatballs in Tomato Sauce with Noodles (G,E)
(v)(h) Breaded Vegetable Fingers with Herby Diced Potatoes (G)

On the side...
Fresh Salad Bar
Vegetables of the Day
For dessert...
(vg) (h) Lemon Shortbread (G)
(v) Cheese Crackers and Apple Wedge (G,D)
Fresh Fruit

TUESDAY

Choose a main meal...
(h) Chicken and Country Vegetable Pie with Potato Wedges (G)

On the side...
Fresh Salad Bar
Vegetables of the Day
For dessert...
(v) Cheese and Tomato Pizza Wedge with Potato Wedges (G,D)
Jacket Potato - (v) Cheese (D), Tuna (F,E) or (v) Baked Beans

WEDNESDAY

Choose a main meal... **WEDNESDAY ROAST**
British Roast Beef, with Traditional Yorkshire Pudding and Gravy (D,E,G)

On the side...
(vg) Quorn Roast in Gravy with (v) Yorkshire Pudding (D,E,G)
Vegetables of the Day
For dessert...
Crispy Roast Potatoes
(v)(h) Syrup Sponge (G,E),
Jacket Potato - (v) Cheese (D),
(v) Ice Cream (D),
Tuna (F,E) or (v) Baked Beans
Fresh Fruit

THURSDAY

Choose a main meal...
Chicken Fillet Wrap and Sweetcorn Salata Dip with Diced Potatoes (G)
(v)(h) Mac 'n' cheese with Freshly Baked Crusty Bread (D,G)

On the side...
Fresh Salad Bar
Vegetables of the Day
For dessert...
(v) Toffee Apple Donut (G,D,E,SB)
(v) Yoghurt (D) or Fresh Fruit

FRIDAY

Choose a main meal... **FRIDAY FRIDAY**
(misc) Battered Fish Fillet (G,F) with Chipped Potatoes

On the side...
Fresh Salad Bar
Peas or Baked Beans
For dessert...
(vg) Jelly with Fruit
(v) (h) Crunch Cookie (G)
(v) Yoghurt (D) or Fresh Fruit

Week two

Warwickshire, Coventry: 2/9, 23/9, 14/10, 4/11, 25/11, 16/12, 20/1/25, 10/2, 10/3, 31/3
Oxfordshire: 2/9, 23/9, 14/10, 4/11, 25/11, 16/12, 20/1/25, 10/2, 10/3, 31/3

MONDAY

Choose a main meal...
British Pork Sausages with Gravy & Mashed Potatoes (G,SU,SB)
(v)(h) Cheese and Potato Pie served with Vegetables of the day (D,E)

On the side...
Fresh Salad Bar
Vegetables of the Day
For dessert...
(vg)(h) Flapjack (G)
(v) Yoghurt (D) or Fresh Fruit

TUESDAY

Choose a main meal...
(h) British Beef Bolognese with Garlic Bread (G, cheese D)

On the side...
(vg) Veggie Plant burger in a High Fibre Bun with Crispy Diced Potatoes (G)
For dessert...
Jacket Potato - (v) Cheese (D), Tuna (F,E) or (v) Baked Beans
Jacket Potato - (v) Cheese (D),
(v) Strawberry Whip with Fruit (D),
(v) Cheese Crackers and Apple Wedge (G,D)
Fresh Fruit

WEDNESDAY

Choose a main meal... **WEDNESDAY ROAST**
British Roast Chicken, Fillet, Sage and Onion Stuffing and Gravy (G)

On the side...
(vg) Quorn Roast in Gravy with Sage and Onion Stuffing (G)
Crispy Roast Potatoes
For dessert...
(v)(h) Jam Sponge (G,E)
(v) Ice Cream (D)
Fresh Fruit

THURSDAY

Choose a main meal...
(h) Italian Chicken Pasta (chicken and pasta in a tomato sauce) with Freshly Baked Wholegrain Baguette (G)
(vg) Veggie Sausage with Herby Diced Potatoes

On the side...
Fresh Salad Bar
Vegetables of the Day
For dessert...
(v)(h) Up Beat Chocolate Cake (G,EB)
(v) Yoghurt (D) or Fresh Fruit

FRIDAY

Choose a main meal... **FRIDAY FRIDAY**
(misc) Salmon Fish Cake with Chipped Potatoes (G,F)

On the side...
Fresh Salad Bar
Peas or Baked Beans
For dessert...
(v)(h) Ginger Cookie (G)
(vg) Jelly with Fruit
(v) Yoghurt (D) or Fresh Fruit

Week three

Warwickshire, Coventry: 9/9, 30/9, 21/10, 11/11, 2/12, 8/1/25, 27/1, 24/2, 17/3, 7/4
Oxfordshire: 9/9, 30/9, 21/10, 11/11, 2/12, 8/1/25, 27/1, 24/2, 17/3, 7/4

MONDAY

Choose a main meal...
Southern Style Chicken Strips in a Wrap with Potato Wedges (G)

On the side...
Fresh Salad Bar
Vegetables of the Day
For dessert...
(v)(h) Cheese and Baked Bean Pasty with Potato Wedges (G,D)
Jacket Potato - (v) Cheese (D),
Tuna (F,E) or (v) Baked Beans
(v)(h) Chocolate Orange Cookie with Orange Wedges (G)
(v) Yoghurt (D) or Fresh Fruit

TUESDAY

Choose a main meal...
Beef Burger in a High Fibre Bun with Crispy Diced Potatoes (G,SB,SU)

On the side...
(h)(v) Cheesy Tomato Pasta Bake with Freshly Baked Wholegrain Baguette (D,G)
For dessert...
(vg)(h) Shortbread (G)
(v) Cheese Crackers and Apple Wedge (G,D)
Fresh Fruit

WEDNESDAY

Choose a main meal... **WEDNESDAY ROAST**
British Roast Pork Loin, Apple Sauce and Gravy

On the side...
(vg) Quorn Roast with Gravy (G)
Vegetables of the Day
Crispy Roast Potatoes
For dessert...
(v)(h) Lemon/ Orange Drizzle Cake (G,E)
(v) Strawberry Swirl Mousse (D)
Fresh Fruit

THURSDAY

Choose a main meal...
(h) Mild and Creamy Chicken Korma with Wholegrain rice (D)
(vg) Quorn Dippers with Seasoned Wedges (G)

On the side...
Fresh Salad Bar
Vegetables of the Day
For dessert...
(v) Pancakes with Fruit (G,D,E)
(v) Yoghurt (D) or Fresh Fruit

FRIDAY

Choose a main meal... **FRIDAY FRIDAY**
(misc) Fish Fillet Fingers (G,F) with Chipped Potatoes

On the side...
Fresh Salad Bar
Peas or Baked Beans
For dessert...
(v)(h) School Favourite Sprinkles Sponge Cake (G,E)
(v) Yoghurt (D) or Fresh Fruit

Fruit Cordial or Fruit Water from the Hydration Station, Semi Skimmed Milk & Fresh Bread are also offered daily

Vegetable accompaniments change to reflect seasonal availability

ALLERGEN KEY G = Gluten / Wheat
Vg = Vegan
V = Vegetarian
H = Halal
D = Dairy
M = Mustard
E = Egg
S = Soybean
SB = Soya
SU = Sugar



Allergies
Please contact your school canteen for information regarding the content of dishes and products on our menu.



SOMETIMES YOU FORGET THAT YOU'RE
AWESOME SO THIS IS YOUR REMINDER.

SPECIAL EDITION



Thursday 6 March 2025

Welcome to the special edition on the Family Information Service newsletter.

The topic of this month's edition is **child safety and accident prevention**, with a focus on **poisoning**.

In Warwickshire a significant number of admissions to hospital for children and young people is due to poisoning. In most cases the poisoning is due to paracetamol or similar household medicines.

Safe storage of medicine can help prevent poisonings within the home:

- Remove the opportunity for your child or young person to access paracetamol or other medicines by storing them safely in the home. Consider using a lockable storage box or cabinet.
- Don't leave packets of medicine in easily accessible places such as kitchen drawers, work bags, or bedsides.
- Always check the dose and supervise children and young people when they are taking medication.
- Take unwanted medicines and tablets to the pharmacy for disposal.
- Buy over the counter medicines in small amounts and keep in their blister packs.

If you suspect that someone has taken an overdose or has been poisoned, do not try to treat them yourself. Get medical help immediately.

If you are concerned about your child self-harming, or being at risk of self-harm, services and resources available within Warwickshire can be accessed [here](#).

LEARNING IMPROVEMENT PRIORITIES 2024/2025

KEY PRIORITIES	PRIORITY
PRIORITY 1.	Continue to meet the social and emotional wellbeing needs of all of our children, including meeting the needs of our Special Educational Needs children.
PRIORITY 2.	Improve the writing practice and progress so that most children meet or exceed the expected standard for the age. Embed the Jo Considine the Write Stuff approach to enhance the writing planning so that all learners, including Greater Depth writers reach their full potential.
PRIORITY 3.	To re-establish a whole school culture where behaviour, routines and expectations are implemented positively and consistently, reducing incidents of low-level behaviours
PRIORITY 4	Further develop maths teaching, training and delivery so that children reach their full potential in maths including those working at greater depth.

Free School Meals

Schools should provide meal options for all children attending school. Meals are available free of charge to:

- All infant pupils (reception, year 1 and year 2) - known as universal FSM
- Pupils who meet the free school meals [eligibility criteria](#) - known as benefits - related FSM

If your child is in reception, year 1 or year 2, they will automatically be entitled to universal infant free school meals. However, if you do meet the benefits - related free school meals eligibility criteria, then it is advised you apply to receive additional benefits:

- [Holiday activities and food \(HAF\)](#) programme is for children aged 4 to 16, in reception to year 11, in receipt of benefits-related free school meals. HAF offers eligible pupil's access to activities and at least one healthy meal is provided during each session. The activities take place during the Easter, summer, and Christmas school holidays.
- [Pupil premium](#) is extra funding paid directly to schools for each pupil who is eligible for free school meals. It can help to fund valuable teaching and learning support to improve pupil's education.

You can apply for benefits-related FSM at any time online by clicking the following link:

<https://www.warwickshire.gov.uk/education-learning/apply-free-school-meals>

If you have any questions or need support with applying, please contact the team by emailing freemeals@warwickshire.gov.uk or calling 01926 359189.



Car Parking

This is a polite request to ask all parents who need to drive to school to remember to park considerately and safely at school drop off and collection. Please park with care and help make the area near and around our school a safer place for our children. Parking away from school will also help keep congestion to a minimum and maintain a good relationship with our neighbours.

There is car park available opposite the school site, and the Community Church.

We all want to help keep our children safe - please take some time to read and remember Warwickshire County Councils road safety code for parents:

- Park away from school gates
- Always hold hands with young children
- Remember - your child will copy you
- Every road means STOP LOOK LISTEN
- Never get children out of a car roadside
- Think safer places to cross the road
- Secure your child's car seat correctly

Let's all work together to keep all our children safe outside school.

LEAVE OF ABSENCE DURING TERM TIME
UPDATED INFORMATION FOR PARENTS

The Supreme Court has clarified the law on unauthorised leave, including holidays, during term time (Platt v Isle of Wight 2017). The Supreme Court has made clear that attending school 'regularly' means that the children must attend school on every day that they are required to do so. As such, the parents of any child who is absent from school without authorisation for any length of time are likely to be considered as committing an offence under s444 of the Education Act 1996.

The law states a leave of absence may only be granted by a school if an application is made in advance and if it considers there are exceptional circumstances relating to the application.

Schools must judge each application individually considering the specific facts and circumstances and relevant background context behind each request.

A leave of absence is granted entirely at the school's discretion. Generally, a need or desire for a holiday or other absence for the purpose of leisure and recreation would not constitute an exceptional circumstance.

Where a leave of absence is granted, the school will determine the number of days a pupil can be absent from school.

When making an application for Leave of Absence parents are advised to give sufficient information and time to allow the Head teacher the opportunity to consider all the exceptional circumstances and to notify parents of their decision. The school may also request further information on the application and supporting documentation where appropriate.

It is advised that if the resident parent has not received notification or a response regarding the leave of absence application, it is the parents' responsibility to ascertain if the leave is authorised prior to the start of the leave.

The school can only consider Leave of Absence requests which are made by the 'resident' parent ie the parent with whom the child normally resides.

Where applications for leave of absence are made in advance and refused, the child is expected to be in school on the dates set out in the application. If the child is absent during that period, it will be recorded as an unauthorised absence. Where a leave of absence is requested, but additional days taken either prior to or after the request may be considered as part of the leave of absence.

Leave of Absences which are not made in advance cannot be authorised in line with legislation. This will result in the absence being recorded as 'unauthorised'.

All matters of unauthorised absence relating to a Leave of Absence will be referred to the Warwickshire Attendance Service, part of Warwickshire County Council. Penalty Notices are issued in accordance with Warwickshire County Council's Code of Conduct for Penalty Notices and in the first instance, as an alternative to prosecution proceedings.

Leave of Absence taken in the academic year 2024-25

The law relating to Penalty Notices changed with effect from 19 August 2024. Therefore, Penalty Notices issued for Leave of Absence taken from September 2024 will be issued in accordance with the updated legislation.

- Penalty Notices are issued to each parent of each absent child, (for example 2 children and 2 parents, means each parent will receive 2 invoices – 4 in total).

- o First Leave of Absence offence: The Penalty Notice amount of £160 to be paid within 28 days, this is reduced to £80 each child if paid within 21 days.

- o Second Leave of Absence offence within a 3-year period (from the date of issue of the first penalty notice): The amount of £160 paid within 28 days. No reduced amount.

- Payment plans will not be offered and/or payments received outside of the 28-day period will not be accepted. Where a penalty notice expires unpaid the matter will be referred to Warwickshire County Council's Legal Services to consider criminal prosecution.
- Third Leave of Absence offence within a 3-year period (from the date of issue of the first penalty notice): A penalty notices will be not be issued and the matter will be referred to Warwickshire County Council's Legal Services to consider instigating criminal prosecution proceedings under S444 of Education Act 1996.

Your child's progress academically as well as socially is our shared priority.



GOVERNORS

Please meet our Governors – If you need to contact the Chair of Governors, Mr John Price, please contact the school office on 02476 392219 or admin2107@welearn365.com



Mr J Price - Chair of Governors
Mrs K Middleton - Head Teacher
Mrs Shilton - Staff Governor
Vacancy - Co-opted Governor
Mr J Parr - Co-opted Governor
Ms E Garner - Co-opted Governor
Mr C Joyce - Parent Governor
Vacancy - Co-opted Governor