



Galley Common Infant School NEWSLETTER

Issue 15
December 2024

Dream, Believe, Achieve

STARS OF THE WEEK

The following children were chosen as "Star of the Week"

There are no stars of the week this week due to golden book assembly on Wednesday.



ATTENDANCE

Well done to Class 4 who have achieved 98.4% attendance this week.



Class 1 - 91.15%	Class 2 - 97.5%
Class 3 - 82.96%	Class 4 - 98.4%
Class 5 - 88.62%	Class 6 - 96%

Our DfE target is 96%

Whole School Attendance this week is 92.3%

School News

What an exciting time in school we have had this week!

On Tuesday we had our special helper's assembly.

On Wednesday and Thursday, we had our Christmas disco's.

On Wednesday we enjoyed a lovely Christmas dinner. (Thank you Mrs Ling). We also held our Golden Book assembly where 28 of the children were awarded certificates for 100% attendance this term. Team Hughes were given a certificate for the most team points this term. There were 6 children that had been chosen by the dinner ladies for good behaviour at lunch time, that joined Mrs Middleton for afternoon tea in her office. Well done to all those children.

On Thursday we had our Christmas party day, and all the children looked wonderful in their party clothes and Christmas jumpers. We had a lovely lunchtime party and then in the afternoon a very special person came to visit the children at Galley Common Infant School. **Father Christmas** came in and had a chat with the children and then gave them all some Christmas presents!



DIARY DATES



December	
Fri 20 th	Last Day of Term
January	
Mon 6 th	INSET Day (children not in school)
Mon 13 th	9am Writing Meeting for Reception Parents
Wed 15 th	9am Phonics Screen Check Meeting for Y1 Parents

Teacher Training Dates:

4/11/2024

6/1/2025

[Warwickshire School Term Dates 24/25](#)

Christmas Raffle - Thank you to everyone that has bought a raffle ticket. We have raised **£235!**



If you have been lucky enough to win a prize you would have been notified by ParentMail. Thank you.

Jam Jar Tombola - thank you to everyone who decorated a jam jar and paid £1 to enter the tombola. On Thursday the children picked a number at random and won the corresponding jar. We hope they had fun and enjoyed showing you what they had won

Christmas Disco - what a lovely time the children had at the Christmas Disco's this week. Thank you to the Friends of Galley Common for organising the event.

Today we have said goodbye to Miss Jamieson (Class 5 teacher) and would like to thank her for her time teaching at the school over the past 6 years. She will be truly missed by all the children and staff and we wish her all the best for the future.

We will be welcoming Mrs Parker-Brown to the school in January.

Can we please remind you that smoking and vaping are not permitted on site.

We would like to thank our families for the gifts received by staff. We wish you all a happy and safe Christmas and look forward to welcoming you back on Tuesday 7th January.



The deadline for 2025 primary school places is 15 January 2025, so if you could please send out a reminder to your parents and carers to encourage them to submit their application on time, that would be much appreciated.

All applications received by the deadline of 15 January will receive a school offer on 16 April next year, which is National Offer Day. Applications submitted after the deadline will only be considered after this, meaning the child is much less likely to be offered a place at a preferred school.

Applications should be made online at: <https://www.warwickshire.gov.uk/primaryplace>, where they can also find lots of useful information on priority school areas and admissions criteria.

<https://www.nspcc.org.uk/keeping-children-safe/online-safety/parental-controls/>

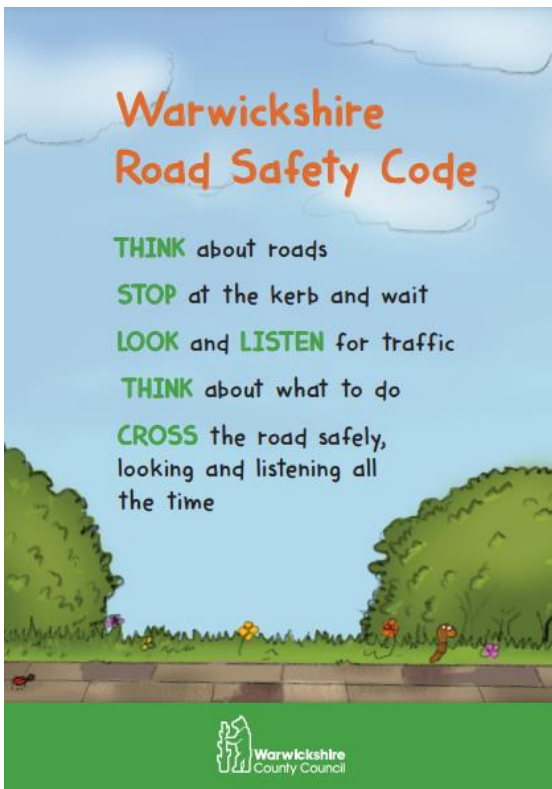
NSPCC and O2 have teamed together to offer an online safety advice line. If you have a question about parental controls or concern about a social network your child uses, expert advisors at our free helpline are here to help. We're here 9am-6pm every day. [Use Parental Controls to Keep Your Child Safe | NSPCC](#)

If you're worried about what your child's searching for or seeing online, we can help you to set up parental controls and keep them safe. Contact Number- Tel 0808 8005000

Our School Rules

1. Listen Carefully
2. Take Care
3. Try your best





Junior Road Safety Officers:

Class 3 - Daniel Class 4 - Jesse
 Class 5 - Teddy Class 6 - Millie

Our school has once again signed up to the Safe and Active Schools Programme 2024-2025. As part of the programme all children will be receiving age-appropriate road safety sessions, and we will also be participating in and promoting active travel.

We recognise how important messaging is for our children. Your children copy your actions, and your behaviour serves as a powerful role model. We would like to ask all our families to model the safest behaviours near the road for children to copy and make good choices around travelling actively on the school run.

We will be sharing messages and ideas from the Safe and Active Schools team and further information about the children's road safety learning in school throughout the year.

For further information about road safety and active travel you can follow or contact the road safety education team.

X (previously Twitter) - **@WCCSafe_Active**

Facebook - **@WCCSafeActiveTravel**

Email - **roadsafetyeducation@warwickshire.gov.uk**



Be Bright, Be Seen animation and newsletter article



Be Bright, Be Seen

Being visible to other road users is important all year round, whether walking, cycling, scooting or wheeling. However, it is especially important during the autumn and winter months when days are shorter and evenings longer.

We can improve our visibility and help drivers and other road users see us by wearing light, bright and fluorescent clothing or accessories in the day, and reflective clothing or accessories in the evening.

If cycling, we must make sure our bicycles have a working white front light, and red back light.

A simple message is to help us remember this is 'Be Bright Be Seen'.



School Uniform



At Galley Common Infant School, we take pride in our school uniform.

Below are just a few reminders about our school uniform expectations.

Ankle boots should not be worn. The correct school uniform requirement is that children should wear sensible **black shoes**.

Jewellery other than stud earrings is not allowed. Children who do wear stud earrings must tape these up or remove them on PE days.

Nail polish should not be worn by children at school. Could you please ensure that all nail polish is removed before coming to school.

Tattoos - Please ensure tattoos are removed for school.

Toys in School - Please do not allow your child to bring in any toys to school, unless permission has been given by a member of staff.

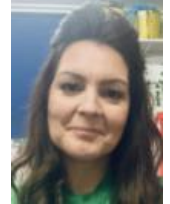
On PE days children should wear a black tracksuit and yellow PE shirt during the winter months and in the summer months blue shorts and a yellow shirt should be worn.

We do hope that you will support us by ensuring that your child continues to wear the appropriate school uniform. Thank you.

SAFEGUARDING

"The safety of the child is the first and paramount consideration"

Child protection concerns - If you have any child protection concerns, or wish to raise any issues, please feel free to call into school and speak to Mrs Middleton, Mrs Newman, or Mrs Salmon. You can also email safeguarding2107@welearn365.com You can also speak to a member of the Social Care Emergency Duty Team on 01926 886922.



Packed Lunches - Could we please remind parents that we are a NUT FREE school. Please do not send children to school with anything containing nuts. Thank you.

The Highway Code / School Keep Clear Signs / Zig-Zags/ Double Yellow Lines:

Warwickshire Road Safety Partnership would like to remind parents of The Highway Code. The Highway Code states: "You MUST NOT wait or park, or stop to set down and pick up passengers, on school entrance markings." (Highway Code rule 238, Road Traffic Regulation Act 1984.)

School Keep Clear markings mean no stopping during the time and days specified on adjacent or nearby signs. The markings help prevent vehicles from parking near or in front of school entrances, to ensure safe access for children and parents.

Please park safely, legally and considerately and away from the school gates.

Weekly Menu



Week one

Warwickshire, Coventry: 18/9, 7/10, 18/11, 9/12, 13/1/25, 3/2, 3/3, 24/3
Oxfordshire: 18/9, 7/10, 18/11, 9/12, 13/1/25, 3/2, 3/3, 24/3

MONDAY

Choose a main meal...
Pork Meatballs in Tomato Sauce with Noodles (G,E)
(Vg) Breaded Vegetable Fingers with Herby Diced Potatoes (G)

On the side...
Fresh Salad Bar
Vegetables of the Day

For dessert...
(Vg) (h) Lemon Shortbread (G)
(V) Cheese Crackers and Apple Wedge (G,D)
Fresh Fruit

TUESDAY

Choose a main meal...
(h) Chicken and Country Vegetable Pie with Potato Wedges (G)

On the side...
Fresh Salad Bar
Vegetables of the Day

For dessert...
(V) Cheese and Tomato Pizza Wedge with Potato Wedges (G,D)
Jacket Potato - (V) Cheese (D), Tuna (F,E) or (V) Baked Beans

WEDNESDAY

Choose a main meal... **WEDNESDAY ROAST**
British Roast Beef, with Traditional Yorkshire Pudding and Gravy (D,E,G)

On the side...
(Vg) Quorn Roast in Gravy with (V) Yorkshire Pudding (D,E,G)
Vegetables of the Day

For dessert...
Crispy Roast Potatoes
(V) (h) Syrup Sponge (G,E)
Jacket Potato - (V) Cheese (D), Tuna (F,E) or (V) Baked Beans
Fresh Fruit

THURSDAY

Choose a main meal...

Chicken Fillet Wrap and Sweetcorn Salata Dip with Diced Potatoes (G)
(V) (h) Mac 'n' cheese with Freshly Baked Crusty Bread (D,G)

On the side...
Fresh Salad Bar
Vegetables of the Day

For dessert...
Jacket Potato - (V) Cheese (D), Tuna (F,E) or (V) Baked Beans
(V) Toffee Apple Donut (G,D,E,SB)
(V) Yoghurt (D) or Fresh Fruit

FRIDAY

Choose a main meal... **FRIDAY**
(misc) Battered Fish Fillet (G,F) with Chipped Potatoes

On the side...
Fresh Salad Bar
Peas or Baked Beans

For dessert...
(Vg) Vegetarian Hotdog with Chipped Potatoes (G)
Jacket Potato - (V) Cheese (D), Tuna (F,E) or (V) Baked Beans
(Vg) Jelly with Fruit
(V) (h) Crunch Cookie (G)
(V) Yoghurt (D) or Fresh Fruit

Week two

Warwickshire, Coventry: 2/9, 23/9, 14/10, 4/11, 25/11, 16/12, 20/1/25, 10/2, 10/3, 31/3
Oxfordshire: 2/9, 23/9, 14/10, 4/11, 25/11, 16/12, 20/1/25, 10/2, 10/3, 31/3

MONDAY

Choose a main meal...
British Pork Sausages with Gravy & Mashed Potatoes (G,SU,SB)
(V) (h) Cheese and Potato Pie served with Vegetables of the Day (D,E)

On the side...
Fresh Salad Bar
Vegetables of the Day

For dessert...
(Vg) (h) Flapjack (G)
Tuna (F,E) or (V) Baked Beans
(V) Yoghurt (D) or Fresh Fruit

TUESDAY

Choose a main meal...
(h) British Beef Bolognese with Garlic Bread (G, cheese D)

On the side...
Fresh Salad Bar
Vegetables of the Day

For dessert...
(Vg) Veggie Plant burger in a High Fatne Bun with Crispy Diced Potatoes (G)
Jacket Potato - (V) Cheese (D), Tuna (F,E) or (V) Baked Beans
Wedge (G,D)
Fresh Fruit

WEDNESDAY

Choose a main meal... **WEDNESDAY ROAST**
British Roast Chicken, Fillet, Sage and Onion Stuffing and Gravy (G)

On the side...
Fresh Salad Bar
Vegetables of the Day

For dessert...
(Vg) Quorn Roast in Gravy with Sage and Onion Stuffing (G)
Crispy Roast Potatoes
Jacket Potato - (V) Cheese (D), Tuna (F,E) or (V) Baked Beans
(V) (h) Jam Sponge (G,E)
(V) Ice Cream (D)
Fresh Fruit

THURSDAY

Choose a main meal...

(h) Italian Chicken Pasta (chicken and pasta in a tomato sauce) with Freshly Baked Wholegrain Baguette (G)
(Vg) Veggie Sausage with Herby Diced Potatoes

On the side...
Fresh Salad Bar
Vegetables of the Day

For dessert...
Jacket Potato - (V) Cheese (D), Tuna (F,E) or (V) Baked Beans
(V) (h) Up Beat Chocolate Cake (G,EB)
(V) Yoghurt (D) or Fresh Fruit

FRIDAY

Choose a main meal... **FRIDAY**
(misc) Salmon Fish Cake with Chipped Potatoes (G,F)

On the side...
Fresh Salad Bar
Peas or Baked Beans

For dessert...
(V) (h) Rustic Pizza Wedge with Chipped Potatoes (G,D,SB)
Jacket Potato - (V) Cheese (D), Tuna (F,E) or (V) Baked Beans
(V) (h) Ginger Cookie (G)
(Vg) Jelly with Fruit
(V) Yoghurt (D) or Fresh Fruit

Week three

Warwickshire, Coventry: 9/9, 30/9, 21/10, 11/11, 2/12, 8/1/25, 27/1, 24/2, 17/3, 7/4
Oxfordshire: 9/9, 30/9, 21/10, 11/11, 2/12, 8/1/25, 27/1, 24/2, 17/3, 7/4

MONDAY

Choose a main meal...
Southern Style Chicken Strips in a Wrap with Potato Wedges (G)

On the side...
Fresh Salad Bar
Vegetables of the Day

For dessert...
(V) (h) Chocolate Orange Cookie with Orange Wedges (G)
Jacket Potato - (V) Cheese (D), Tuna (F,E) or (V) Baked Beans
(V) Yoghurt (D) or Fresh Fruit

TUESDAY

Choose a main meal...
Beef Burger in a High Fibre Bun with Crispy Diced Potatoes (G,SB,SU)

On the side...
Fresh Salad Bar
Vegetables of the Day

For dessert...
(h) (V) Cheesy Tomato Pasta Bake with Freshly Baked Wholegrain Baguette (D,G)
Jacket Potato - (V) Cheese (D), Tuna (F,E) or (V) Baked Beans
(V) Cheese Crackers and Apple Wedge (G,D)
Fresh Fruit

WEDNESDAY

Choose a main meal... **WEDNESDAY ROAST**
British Roast Pork Loin, Apple Sauce and Gravy

On the side...
Fresh Salad Bar
Vegetables of the Day

For dessert...
(Vg) Quorn Roast with Gravy (G)
Crispy Roast Potatoes
Jacket Potato - (V) Cheese (D), Tuna (F,E) or (V) Baked Beans
(V) (h) Lemon/ Orange Drizzle Cake (G,E)
(V) Strawberry Swirl Mousse (D)
Fresh Fruit

THURSDAY

Choose a main meal...
(h) Mild and Creamy Chicken Korma with Wholegrain rice (D)

On the side...
Fresh Salad Bar
Vegetables of the Day

For dessert...
(Vg) Quorn Dippers with Seasoned Wedges (G)
Jacket Potato - (V) Cheese (D), Tuna (F,E) or (V) Baked Beans
(V) Pancakes with Fruit (G,D,E)
(V) Yoghurt (D) or Fresh Fruit

FRIDAY

Choose a main meal... **FRIDAY**
(misc) Fish Fillet Fingers (G,F) with Chipped Potatoes

On the side...
Fresh Salad Bar
Peas or Baked Beans

For dessert...
(V) Plantain Melt with Chipped Potatoes parbaita in a fingerful topped with nutt; tomato sauce and grated cheese (G,D)
Jacket Potato - (V) Cheese (D), Tuna (F,E) or (V) Baked Beans
(V) (h) School Favourite Sprinkles Sponge Cake (G,E)
(V) Yoghurt (D) or Fresh Fruit

Fruit Cordial or Fruit Water from the Hydration Station, Semi Skimmed Milk & Fresh Bread are also offered daily



F = Fish D = Dairy
M = Mutton E = Egg
S = Soybean SB = Soya
Su = Sultana

ALLERGEN KEY G = Gluten / Wheat
Vg = Vegan G = Dairy
V = Vegetarian S = Soya
H = Halal

Allergies
Please contact your school canteen for information regarding the content of dishes and products on our menu.

Vegetable accompaniments change to reflect seasonal availability

FAST FACTS: SHARING

Children *start forming* their friend relationships **around 3.**



Children are not developmentally ready to share **until 5 or 6.**

43% of parents think kids *should have mastered* sharing **by 2.**

Research shows that forced sharing actually delays the development of **sharing skills** and **generosity.**



Children who feel secure in their ownership, and who *choose* to share, **develop lasting generosity.**

RISE information sessions for parents
<https://cwrise.com/for-parents/>



Tuesday 17 December 2024

This week's Family Information Service newsletter includes information about:

- Keeping your children safe at home over the Christmas break
- Becoming a childminder
- Mental health support over the festive season

and much more!

The Family Information Service (FIS) supports families across Warwickshire with information and signposting. You can get in touch with the team by emailing fis@warwickshire.gov.uk, calling [0800 408 1558](tel:08004081558) or finding support on www.warwickshire.gov.uk/childrenandfamilies.

If you would like to know more about FIS and where to find information and support on the FIS and SEND Local Offer webpages, book a place on an [online FIS discovery session](#).

**LEARNING IMPROVEMENT PRIORITIES
2024/2025**

KEY PRIORITIES	PRIORITY
PRIORITY 1.	Continue to meet the social and emotional wellbeing needs of all of our children, including meeting the needs of our Special Educational Needs children.
PRIORITY 2.	Improve the writing practice and progress so that most children meet or exceed the expected standard for the age. Embed the Jo Considine the Write Stuff approach to enhance the writing planning so that all learners, including Greater Depth writers reach their full potential.
PRIORITY 3.	To re-establish a whole school culture where behaviour, routines and expectations are implemented positively and consistently, reducing incidents of low-level behaviours
PRIORITY 4	Further develop maths teaching, training and delivery so that children reach their full potential in maths including those working at greater depth.

Free School Meals

Schools should provide meal options for all children attending school. Meals are available free of charge to:

- All infant pupils (reception, year 1 and year 2) - known as universal FSM
- Pupils who meet the free school meals [eligibility criteria](#) - known as benefits - related FSM

If your child is in reception, year 1 or year 2, they will automatically be entitled to universal infant free school meals. However, if you do meet the benefits - related free school meals eligibility criteria, then it is advised you apply to receive additional benefits:

- [Holiday activities and food \(HAF\)](#) programme is for children aged 4 to 16, in reception to year 11, in receipt of benefits-related free school meals. HAF offers eligible pupil's access to activities and at least one healthy meal is provided during each session. The activities take place during the Easter, summer, and Christmas school holidays.
- [Pupil premium](#) is extra funding paid directly to schools for each pupil who is eligible for free school meals. It can help to fund valuable teaching and learning support to improve pupil's education.

You can apply for benefits-related FSM at any time online by clicking the following link:

<https://www.warwickshire.gov.uk/education-learning/apply-free-school-meals>

If you have any questions or need support with applying, please contact the team by emailing freemeals@warwickshire.gov.uk or calling 01926 359189.



Car Parking

This is a polite request to ask all parents who need to drive to school to remember to park considerately and safely at school drop off and collection. Please park with care and help make the area near and around our school a safer place for our children. Parking away from school will also help keep congestion to a minimum and maintain a good relationship with our neighbours.

There is car park available opposite the school site, and the Community Church.

We all want to help keep our children safe - please take some time to read and remember Warwickshire County Councils road safety code for parents:

- Park away from school gates
- Always hold hands with young children
- Remember - your child will copy you
- Every road means STOP LOOK LISTEN
- Never get children out of a car roadside
- Think safer places to cross the road
- Secure your child's car seat correctly

Let's all work together to keep all our children safe outside school.

LEAVE OF ABSENCE DURING TERM TIME UPDATED INFORMATION FOR PARENTS

The Supreme Court recently reached a decision in the case of *Platt v Isle of Wight Council* which has clarified the law on unauthorised leave, including holidays, during term time. The parents of children of compulsory school age are required to ensure that they attend school on a regular basis. The Supreme Court has made clear that attending school 'regularly' means that the children must attend school on every day that they are required to do so. As such, the parents of any child who is absent from school without authorisation for any length of time are likely to be considered as committing an offence under s444 of the Education Act 1996.

Head Teachers retain the ability to authorise leave in accordance with the Education (Pupil Registration) (England) Regulations 2006. When considering such requests for a leave of absence, the school are obliged to act within the law. Head Teachers may not grant any leave of absence during term time unless there are exceptional circumstances relating to the application. If the leave is granted, head teachers are able to determine the number of school days a child can be absent for.

It is for the Head Teacher to decide what is 'exceptional' and it is at their discretion if the circumstances warrant the leave to be granted. The school can only consider Leave of Absence requests which are made by the 'resident' parent.

Each application for a leave of absence will be considered on a case by case basis and on its own merits.

Where applications for leave of absence are made in advance and refused, the child will be required to be in school on the dates set out in the application. If the child is absent during that period, it will be recorded as an unauthorised absence.

Failure to make an application for leave in advance will result in the absence being recorded as an unauthorised absence.

Your child's progress academically as well as socially is our shared priority



GOVERNORS

Please meet our Governors – If you need to contact the Chair of Governors, Mr John Price, please contact Mrs Arkinstall in the school office on 02476 392219 or admin2107@welearn365.com



Mr J Price - Chair of Governors
Mrs K Middleton - Head Teacher
Mrs Shilton - Staff Governor
Mrs K Gilbert - Co-opted Governor
Mr J Parr - Co-opted Governor
Ms E Garner - Co-opted Governor
Mr C Joyce - Parent Governor
Vacancy - Co-opted Governor

The Bedworth Civic Hall
in association with PR Productions proudly present...

Jack and the Beanstalk

BEDWORTH CIVIC HALL
13th - 24th December 2024

Tickets From Only **£12**

BOOK NOW AT prproductions.biz

www.galleycommoninfschool.co.uk

HAF
Free holiday activity & food places

funstar
Education Through Performing Arts

£25 per day

8.45am - 3.30pm
Ages 5-11

Winter camp

PLAY THROUGH PERFORMING ARTS

Singing, dancing, acting, games, arts & crafts, snake handling, den making, bouncy inflatable, face painting, glitter tattoos & more.....

30/12/24
31/12/24
02/01/25 & 03/01/25

Dunchurch Baptist Church Rugby CV22 6RF

Aladdin

SUPPORTED BY:
Warwickshire County Council

WWW.FUNSTAREDCATION.CO.UK
INFO@FUNSTAREDCATION.CO.UK

Department for Education