



# Galley Common Infant School NEWSLETTER

Issue 11  
November 2024

Dream, Believe, Achieve

## STARS OF THE WEEK

The following children were chosen as "Star of the Week"

Class 1 - Aria-Jae + Entorra    Class 2 - Jacob + Eva  
Class 3 - Imanii + Aron        Class 4 - Marcie + Willow  
Class 5 - Eric + Denzel        Class 6 - Mia + Lily



## ATTENDANCE

Well done to Class 6 who have achieved 98% attendance this week.

Class 1 - 92.69%                      Class 2 - 91.2%  
Class 3 - 91.1%                      Class 4 - 96%  
Class 5 - 95.17%                    Class 6 - 98%



**Our DfE target is 96%**

**Whole School Attendance this week is 94.14%**

## School News

**Christmas Performances** - tickets are still available to purchase via ParentMail for the upcoming Christmas performances. If you wish to attend please ensure you have booked a ticket by the 4<sup>th</sup> December. If there are spare tickets available after this date, we will let parents know. Thank you.



Could we also please ask that childcare arrangements are made for younger siblings. We are limited on the amount of people we are allowed in the school hall due to health and safety reasons. Thank you.

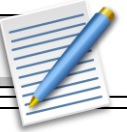
For the evening performances, children should be brought back to school at 5.30pm in their costume.

**Christmas Bingo** - The FOGC will be holding a Christmas Prize Bingo on Friday 6<sup>th</sup> December. Tickets are still available to purchase from the school office.

Thank you to everyone that has donated something towards our Christmas bingo and raffle today. If you have not yet been able to bring anything to school, please send it in on Monday.



## DIARY DATES



November	
Sat 30 <sup>th</sup>	Church Christmas Fayre (choir)
December	
Weds 4 <sup>th</sup>	Bedworth Life Church Theatre Trip
Thurs 5 <sup>th</sup>	8:45am RISE Coffee Morning
Fri 6 <sup>th</sup>	Christmas Bingo 5:30-7:30pm
Mon 9 <sup>th</sup>	Nasal Flu Immunisations (more information to follow) Y1 Christmas Performance 6pm
Tues 10 <sup>th</sup>	Y2 Christmas Performance 1:45pm YR Christmas Performance 6pm
Weds 11 <sup>th</sup>	YR Christmas Performance 9:30am Y1 Christmas Performance 1:45pm Y2 Christmas Performance 6pm
Thurs 12 <sup>th</sup>	Y1 Christmas Performance for Grandparents 9:30am Y2 Christmas Performance for Grandparents 1:45pm
Fri 13 <sup>th</sup>	YR Christmas Performance for Grandparents 9:30am KS1 Christmas Carols for OAP'S 11am
Tues 17 <sup>th</sup>	Helpers Assembly 9:15am
Weds 18 <sup>th</sup>	YR Christmas Disco 3:15-4:30pm
Thurs 19 <sup>th</sup>	KS1 Christmas Disco 3:15-4:30pm
Fri 20 <sup>th</sup>	Last Day of Term

### Teacher Training Dates:

4/11/2024

6/1/2025

[Warwickshire School Term Dates 24/25](#)

**KS1 Christmas Film Night** - Thank you to all the children that have purchased a ticket for our Christmas film night. The FOGC have raised £219. Thank you.



**Bedworth Life Church Theatre Trip** - our school Theatre trip is fast approaching please ensure you have filled in your child's consent form and made payment by Friday 29<sup>th</sup> November.

Tel: 02476 392219



We are thrilled to have been awarded £1,500 from Tesco to improve our playground markings! The children are excited to give their ideas and we will be adding the markings in the Summer for the children to enjoy.

Thank you to Tesco and to our families for nominating our school!



**The deadline for applying for your child's school reception place is:**



ol Places

The deadline for 2025 primary school places is 15 January 2025, so if you could please send out a reminder to your parents and carers to encourage them to submit their application on time, that would be much appreciated.

All applications received by the deadline of 15 January will receive a school offer on 16 April next year, which is National Offer Day. Applications submitted after the deadline will only be considered after this, meaning the child is much less likely to be offered a place at a preferred school.

Applications should be made online at: <https://www.warwickshire.gov.uk/primaryplace>, where they can also find lots of useful information on priority school areas and admissions criteria.

### Asda 'cashpot' rewards scheme

Please sign up and select Galley Common Infant School to help us raise funds for our outdoor provision enrichment for our children.

As a small village school, we really need your help!

**you scan,  
we donate  
££s TO  
SCHOOLS.**



**Flu Vaccinations** - the immunisation team will be in school on 9/12/24. Please ensure you have filled in the form using the QR code below by 1/12/24.



## GALLEY COMMON INFANT

WE WILL BE IN SCHOOL ON **09/12/2024**

CLOSING DATE OF CONSENT LINK IS: **01/12/2024** PLEASE NOTE THIS QR CODE IS ONLY FOR THIS SCHOOL

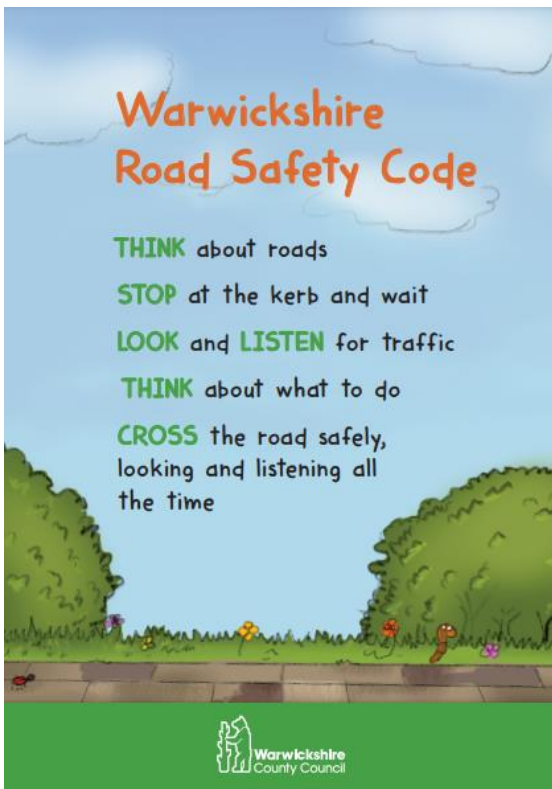
*Scan Me to consent for your child's Flu Vaccination*



North Warwickshire schools: Tel: 02476 321550

Email: [NORTHIMMS@covwarkpt.nhs.uk](mailto:NORTHIMMS@covwarkpt.nhs.uk)





### Junior Road Safety Officers:

Class 3 - Daniel      Class 4 - Jesse  
Class 5 - Teddy      Class 6 - Millie

Our school has once again signed up to the Safe and Active Schools Programme 2024-2025. As part of the programme all children will be receiving age-appropriate road safety sessions, and we will also be participating in and promoting active travel.

We recognise how important messaging is for our children. Your children copy your actions, and your behaviour serves as a powerful role model. We would like to ask all our families to model the safest behaviours near the road for children to copy and make good choices around travelling actively on the school run.

We will be sharing messages and ideas from the Safe and Active Schools team and further information about the children's road safety learning in school throughout the year.

For further information about road safety and active travel you can follow or contact the road safety education team.

X (previously Twitter) - @WCCSafe\_Active

Facebook - @WCCSafeActiveTravel

Email - [roadsafetyeducation@warwickshire.gov.uk](mailto:roadsafetyeducation@warwickshire.gov.uk)



### Be Bright, Be Seen animation and newsletter article



#### Be Bright, Be Seen

*Being visible to other road users is important all year round, whether walking, cycling, scooting or wheeling. However, it is especially important during the autumn and winter months when days are shorter and evenings longer.*

*We can improve our visibility and help drivers and other road users see us by wearing light, bright and fluorescent clothing or accessories in the day, and reflective clothing or accessories in the evening.*

*If cycling, we must make sure our bicycles have a working white front light, and red back light.*

*A simple message is to help us remember this is 'Be Bright Be Seen'.*

## School Uniform



At Galley Common Infant School, we take pride in our school uniform.

Below are just a few reminders about our school uniform expectations.

**Ankle boots** should not be worn. The correct school uniform requirement is that children should wear sensible **black shoes**.

**Jewellery** other than stud earrings is not allowed. Children who do wear stud earrings must tape these up or remove them on PE days.

**Nail polish** should not be worn by children at school. Could you please ensure that all nail polish is removed before coming to school.

**Tattoos** - Please ensure tattoos are removed for school.

**Toys in School** - Please do not allow your child to bring in any toys to school, unless permission has been given by a member of staff.

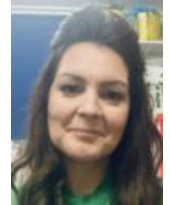
On PE days children should wear a black tracksuit and yellow PE shirt during the winter months and in the summer months blue shorts and a yellow shirt should be worn.

We do hope that you will support us by ensuring that your child continues to wear the appropriate school uniform. Thank you.

## SAFEGUARDING

**"The safety of the child is the first and paramount consideration"**

**Child protection concerns** - If you have any child protection concerns, or wish to raise any issues, please feel free to call into school and speak to Mrs Middleton, Mrs Newman, or Mrs Salmon. You can also email [safeguarding2107@welearn365.com](mailto:safeguarding2107@welearn365.com) You can also speak to a member of the Social Care Emergency Duty Team on 01926 886922.



**Packed Lunches** - Could we please remind parents that we are a NUT FREE school. Please do not send children to school with anything containing nuts. Thank you.

**The Highway Code / School Keep Clear Signs / Zig-Zags/ Double Yellow Lines:**

Warwickshire Road Safety Partnership would like to remind parents of The Highway Code. The Highway Code states: "You MUST NOT wait or park, or stop to set down and pick up passengers, on school entrance markings." (Highway Code rule 238, Road Traffic Regulation Act 1984.)

School Keep Clear markings mean no stopping during the time and days specified on adjacent or nearby signs. The markings help prevent vehicles from parking near or in front of school entrances, to ensure safe access for children and parents.

**Please park safely, legally and considerately and away from the school gates.**

# Weekly Menu

## Week one

Warwickshire, Coventry: 16/9, 7/10, 18/11, 9/12, 13/1/25, 3/2, 3/3, 24/3  
Oxfordshire: 16/9, 7/10, 18/11, 9/12, 13/1/25, 3/2, 3/3, 24/3

### MONDAY

**Choose a main meal...**  
Pork Meatballs in Tomato Sauce with Noodles (G,E)  
(Vg) Breaded Vegetable Fingers with Herby Diced Potatoes (G)

**On the side...**  
Fresh Salad Bar  
Vegetables of the Day  
**For dessert...**  
(Vg) (h) Lemon Shortbread (G)  
(V) Cheese Crackers and Apple Wedge (G,D)  
Fresh Fruit

### TUESDAY

**Choose a main meal...**  
(h) Chicken and Country Vegetable Pie with Potato Wedges (G)

**On the side...**  
Fresh Salad Bar  
Vegetables of the Day  
**For dessert...**  
(V) Cheese and Tomato Pizza Wedge with Potato Wedges (G,D)  
Jacket Potato - (V) Cheese (D), Tuna (F,E) or (V) Baked Beans

### WEDNESDAY

**Choose a main meal...** **WEDNESDAY ROAST**  
British Roast Beef, with Traditional Yorkshire Pudding and Gravy (D,E,G)

**On the side...**  
(Vg) Quorn Roast in Gravy with (V) Yorkshire Pudding (D,E,G)  
Vegetables of the Day  
**For dessert...**  
Crispy Roast Potatoes  
(V) (h) Syrup Sponge (G,E),  
Jacket Potato - (V) Cheese (D),  
(V) Ice Cream (D),  
Tuna (F,E) or (V) Baked Beans  
Fresh Fruit

### THURSDAY

**Choose a main meal...**  
Chicken Fillet Wrap and Sweetcorn Salisa Dip with Diced Potatoes (G)  
(V) (h) Mac 'n' cheese with Freshly Baked Crusty Bread (D,G)

**On the side...**  
Fresh Salad Bar  
Vegetables of the Day  
**For dessert...**  
(V) Toffee Apple Donut (G,D,E,SB)  
(V) Yoghurt (D) or Fresh Fruit

### FRIDAY

**Choose a main meal...** **FRIDAY FRIDAY**  
(misc) Battered Fish Fillet (G,F) with Chipped Potatoes

**On the side...**  
Fresh Salad Bar  
Peas or Baked Beans  
**For dessert...**  
(Vg) Jelly with Fruit  
(V) (h) Crunch Cookie (G)  
(V) Yoghurt (D) or Fresh Fruit

## Week two

Warwickshire, Coventry: 2/9, 23/9, 14/10, 4/11, 25/11, 16/12, 20/1/25, 10/2, 10/3, 31/3  
Oxfordshire: 2/9, 23/9, 14/10, 4/11, 25/11, 16/12, 20/1/25, 10/2, 10/3, 31/3

### MONDAY

**Choose a main meal...**  
British Pork Sausages with Gravy & Mashed Potatoes (G,SU,SB)  
(V) (h) Cheese and Potato Pie served with Vegetables of the day (D,E)

**On the side...**  
Fresh Salad Bar  
Vegetables of the Day  
**For dessert...**  
(Vg) (h) Flapjack (G)  
(V) Yoghurt (D) or Fresh Fruit

### TUESDAY

**Choose a main meal...**  
(h) British Beef Bolognese with Garlic Bread (G, cheese D)

**On the side...**  
(Vg) Veggie Plant burger in a High Fibre Bun with Crispy Diced Potatoes (G)  
**For dessert...**  
Jacket Potato - (V) Cheese (D), Tuna (F,E) or (V) Baked Beans  
Wedge (G,D)  
Fresh Fruit

### WEDNESDAY

**Choose a main meal...** **WEDNESDAY ROAST**  
British Roast Chicken, Fillet, Sage and Onion Stuffing and Gravy (G)

**On the side...**  
(Vg) Quorn Roast in Gravy with Sage and Onion Stuffing (G)  
Crispy Roast Potatoes  
**For dessert...**  
Jacket Potato - (V) Cheese (D),  
Tuna (F,E) or (V) Baked Beans  
(V) (h) Jam Sponge (G,E),  
(V) Ice Cream (D),  
Fresh Fruit

### THURSDAY

**Choose a main meal...**  
(h) Italian Chicken Pasta (chicken and pasta in a tomato sauce) with Freshly Baked Wholegrain Baguette (G)  
(Vg) Veggie Sausage with Herby Diced Potatoes

**On the side...**  
Fresh Salad Bar  
Vegetables of the Day  
**For dessert...**  
(V) (h) Up Beat Chocolate Cake (G,EB)  
(V) Yoghurt (D) or Fresh Fruit

### FRIDAY

**Choose a main meal...** **FRIDAY FRIDAY**  
(misc) Salmon Fish Cake with Chipped Potatoes (G,F)

**On the side...**  
Fresh Salad Bar  
Chipped Potatoes (G,D,SB)  
Peas or Baked Beans  
**For dessert...**  
(V) (h) Rustic Pizza Wedge with Chipped Potatoes (G,D,SB)  
Jacket Potato - (V) Cheese (D),  
Tuna (F,E) or (V) Baked Beans  
(V) (h) Ginger Cookie (G)  
(V) Jelly with Fruit  
(V) Yoghurt (D) or Fresh Fruit

## Week three

Warwickshire, Coventry: 9/9, 30/9, 21/10, 11/11, 2/12, 8/1/25, 27/1, 24/2, 17/3, 7/4  
Oxfordshire: 9/9, 30/9, 21/10, 11/11, 2/12, 8/1/25, 27/1, 24/2, 17/3, 7/4

### MONDAY

**Choose a main meal...**  
Southern Style Chicken Strips in a Wrap with Potato Wedges (G)

**On the side...**  
Fresh Salad Bar  
Vegetables of the Day  
**For dessert...**  
(V) (h) Chocolate Orange Cookie with Orange Wedges (G)  
(V) Yoghurt (D) or Fresh Fruit

### TUESDAY

**Choose a main meal...**  
Beef Burger in a High Fibre Bun with Crispy Diced Potatoes (G,SB,SU)

**On the side...**  
(h) (V) Cheesy Tomato Pasta Bake with Freshly Baked Wholegrain Baguette (D,G)  
**For dessert...**  
(Vg) (h) Shortbread (G)  
(V) Cheese Crackers and Apple Wedge (G,D)  
Fresh Fruit

### WEDNESDAY

**Choose a main meal...** **WEDNESDAY ROAST**  
British Roast Pork Loin, Apple Sauce and Gravy

**On the side...**  
(Vg) Quorn Roast with Gravy (G)  
Vegetables of the Day  
Crispy Roast Potatoes  
**For dessert...**  
Jacket Potato - (V) Cheese (D),  
Tuna (F,E) or (V) Baked Beans  
(V) (h) Lemon/ Orange Drizzle Cake (G,E)  
(V) Strawberry Swirl Mousse (D)  
Fresh Fruit

### THURSDAY

**Choose a main meal...**  
(h) Mild and Creamy Chicken Korma with Wholegrain rice (D)  
(Vg) Quorn Dippers with Seasoned Wedges (G)

**On the side...**  
Fresh Salad Bar  
Vegetables of the Day  
**For dessert...**  
(V) Pancakes with Fruit (G,D,E)  
(V) Yoghurt (D) or Fresh Fruit

### FRIDAY

**Choose a main meal...** **FRIDAY FRIDAY**  
(misc) Fish Fillet Fingers (G,F) with Chipped Potatoes

**On the side...**  
Fresh Salad Bar  
Peas or Baked Beans  
**For dessert...**  
(V) (h) School Favourite Sprinkles Sponge Cake (G,E)  
(V) Yoghurt (D) or Fresh Fruit

Fruit Cordial or Fruit Water from the Hydration Station, Semi Skimmed Milk & Fresh Bread are also offered daily



**ALLERGEN KEY**  
F = Fish  
D = Dairy  
M = Mustard  
S = Sesame  
Su = Sulphites  
W = Wheat  
G = Gluten / Wheat  
C = Dairy  
E = Eggs  
Sb = Soya Beans  
H = Nuts/Almonds

**Allergies**  
Please contact your school canteen for information regarding the content of dishes and products on our menu.

# FAST FACTS: SHARING

Children *start forming* their friend relationships **around 3.**



Children are not developmentally ready to share **until 5 or 6.**

43% of parents think kids *should have mastered* sharing **by 2.**

Research shows that forced sharing actually delays the development of **sharing skills** and **generosity.**



Children who feel secure in their ownership, and who *choose* to share, **develop lasting generosity.**

RISE information sessions for parents  
<https://cwrise.com/for-parents/>



**Tuesday 19 November 2024**

This week's Family Information Service newsletter includes information about:

- Act for Autism conference in Leamington Spa
- Applying for 2025 school places
- Free support for smokers who want to quit

and much more!

The Family Information Service (FIS) supports families across Warwickshire with information and signposting. You can get in touch with the team by emailing [fis@warwickshire.gov.uk](mailto:fis@warwickshire.gov.uk), calling [0800 408 1558](tel:08004081558) or finding support on [www.warwickshire.gov.uk/childrenandfamilies](http://www.warwickshire.gov.uk/childrenandfamilies).

If you would like to know more about FIS and where to find information and support on the FIS and SEND Local Offer webpages, book a place on an [online FIS discovery session](#).

**LEARNING IMPROVEMENT PRIORITIES  
2024/2025**

KEY PRIORITIES	PRIORITY
<b>PRIORITY 1.</b>	Continue to meet the social and emotional wellbeing needs of all of our children, including meeting the needs of our Special Educational Needs children.
<b>PRIORITY 2.</b>	Improve the writing practice and progress so that most children meet or exceed the expected standard for the age. Embed the Jo Considine The Write Stuff approach to enhance the writing planning so that all learners, including Greater Depth writers reach their full potential.
<b>PRIORITY 3.</b>	To re-establish a whole school culture where behaviour, routines and expectations are implemented positively and consistently, reducing incidents of low-level behaviours
<b>PRIORITY 4</b>	Further develop maths teaching, training and delivery so that children reach their full potential in maths including those working at greater depth.

## Free School Meals

Schools should provide meal options for all children attending school. Meals are available free of charge to:

- All infant pupils (reception, year 1 and year 2) - known as universal FSM
- Pupils who meet the free school meals [eligibility criteria](#) - known as benefits - related FSM

If your child is in reception, year 1 or year 2, they will automatically be entitled to universal infant free school meals. However, if you do meet the benefits - related free school meals eligibility criteria, then it is advised you apply to receive additional benefits:

- [Holiday activities and food \(HAF\)](#) programme is for children aged 4 to 16, in reception to year 11, in receipt of benefits-related free school meals. HAF offers eligible pupil's access to activities and at least one healthy meal is provided during each session. The activities take place during the Easter, summer, and Christmas school holidays.
- [Pupil premium](#) is extra funding paid directly to schools for each pupil who is eligible for free school meals. It can help to fund valuable teaching and learning support to improve pupil's education.

You can apply for benefits-related FSM at any time online by clicking the following link:

<https://www.warwickshire.gov.uk/education-learning/apply-free-school-meals>

If you have any questions or need support with applying, please contact the team by emailing [freemeals@warwickshire.gov.uk](mailto:freemeals@warwickshire.gov.uk) or calling 01926 359189.



## Car Parking

This is a polite request to ask all parents who need to drive to school to remember to park considerately and safely at school drop off and collection. Please park with care and help make the area near and around our school a safer place for our children. Parking away from school will also help keep congestion to a minimum and maintain a good relationship with our neighbours.

There is car park available opposite the school site, and the Community Church.

We all want to help keep our children safe - please take some time to read and remember Warwickshire County Councils road safety code for parents:

- Park away from school gates
- Always hold hands with young children
- Remember - your child will copy you
- Every road means STOP LOOK LISTEN
- Never get children out of a car roadside
- Think safer places to cross the road
- Secure your child's car seat correctly

Let's all work together to keep all our children safe outside school.

## LEAVE OF ABSENCE DURING TERM TIME UPDATED INFORMATION FOR PARENTS

The Supreme Court recently reached a decision in the case of *Platt v Isle of Wight Council* which has clarified the law on unauthorised leave, including holidays, during term time. The parents of children of compulsory school age are required to ensure that they attend school on a regular basis. The Supreme Court has made clear that attending school 'regularly' means that the children must attend school on every day that they are required to do so. As such, the parents of any child who is absent from school without authorisation for any length of time are likely to be considered as committing an offence under s444 of the Education Act 1996.

Head Teachers retain the ability to authorise leave in accordance with the Education (Pupil Registration) (England) Regulations 2006. When considering such requests for a leave of absence, the school are obliged to act within the law. Head Teachers may not grant any leave of absence during term time unless there are exceptional circumstances relating to the application. If the leave is granted, head teachers are able to determine the number of school days a child can be absent for.

It is for the Head Teacher to decide what is 'exceptional' and it is at their discretion if the circumstances warrant the leave to be granted. The school can only consider Leave of Absence requests which are made by the 'resident' parent.

*Each application for a leave of absence will be considered on a case by case basis and on its own merits.*

Where applications for leave of absence are made in advance and refused, the child will be required to be in school on the dates set out in the application. If the child is absent during that period, it will be recorded as an unauthorised absence.

Failure to make an application for leave in advance will result in the absence being recorded as an unauthorised absence.

**Your child's progress academically as well as socially is our shared priority**



### GOVERNORS

**Please meet our Governors** – If you need to contact the Chair of Governors, Mr John Price, please contact Mrs Arkinstall in the school office on 02476 392219 or [admin2107@welearn365.com](mailto:admin2107@welearn365.com)



Mr J Price - Chair of Governors  
Mrs K Middleton - Head Teacher  
Mrs Shilton - Staff Governor  
Mrs K Gilbert - Co-opted Governor  
Mr J Parr - Co-opted Governor  
Mr R Scott - Parent Governor  
Mr C Joyce - Parent Governor  
Vacancy - Co-opted Governor

The Bedworth Civic Hall  
in association with PR Productions proudly present...

# Jack and the Beanstalk



**BEDWORTH CIVIC HALL**  
**13th - 24th December 2024**

Tickets From Only **£12**

BOOK NOW AT [prproductions.biz](http://prproductions.biz)

