



# Galley Common Infant School NEWSLETTER

Issue 3  
September 2024

Dream, Believe, Achieve

## STARS OF THE WEEK

The following children were chosen as "Star of the Week"

Class 3 - Arthur + Ava-Mai      Class 4 - Olivia + Tommy  
Class 5 - Nancy + Poppy      Class 6 - Mustafa + Abraham



## ATTENDANCE

Well done to Class 6 who have achieved 100% attendance this week.

Class 1 - 92.22%      Class 2 - 95.2%  
Class 3 - 99.26%      Class 4 - 96.80%  
Class 5 - 85.86%      Class 6 - 100%



**Our DfE target is 96%**

**Whole School Attendance this week is 94.87%**

## School News

**Phonics meeting** - Thank you to those who came along to the Phonics meeting, we hope you found it useful.



**Coffee Morning** - Thank you to everyone who joined Mrs Salmon and RISE for our coffee morning, we hope you found it informative.

**Jeans for Genes** - Thank you to everyone that has already donated towards the Jeans for Genes charity. Currently we have raised £23. Please make your donation of £1.00 using the ParentMail app or sending £1 in with your child. Thank you.



**Macmillan Coffee Morning** - Please join us for our Macmillan Coffee Morning on Friday 27<sup>th</sup> September, 9am-10:30am. If you could please send your child in with shop bought cakes with the ingredients clearly displayed and a shelf life past the 27<sup>th</sup> September 2024. Please note we are a nut free school. Any leftover cakes will be sold at break time to the children for 20p.



## DIARY DATES



### September

Thurs 26<sup>th</sup> Reception Open Day 9:30/1:30

Fri 27<sup>th</sup> Macmillan Coffee Morning

Mon 30<sup>th</sup> 9am Maths Workshop for Parents

### October

Mon 7<sup>th</sup> 9am Reading/Phonics Workshop for KS1 Parents

Wed 9<sup>th</sup> 3:30-6pm Parents Evening

Thurs 10<sup>th</sup> 8:45 Coffee Morning  
3:30-6pm Parents Evening

Fri 11<sup>th</sup> Non-Uniform Day for Harvest Gifts

Wed 16<sup>th</sup> YR Autumn Disco 3:15-4:30pm

Thurs 17<sup>th</sup> KS1 Autumn Disco 3:15-4:30pm

Fri 18<sup>th</sup> Class 5 Assembly 2:30

Fri 25<sup>th</sup> Harvest Assembly's at Church  
9:30 - Class 1,3,5  
10:45 - Class 2,4,6

### December

Mon 9<sup>th</sup> Nasal Flu Immunisations (More information to follow)

**Teacher Training Dates:**

**4/11/2024**

**6/1/2025**

[Warwickshire School Term Dates 24/25](#)

Could we please ask parents that only urgent messages should be passed on directly to the class teachers in the mornings to allow a smooth start to the day, otherwise messages should be left with the gate staff or phone into the school/email.

Again, if you wish to speak with your child's teacher at the end of the day please do so when all other children have been dismissed. This means teachers are able to send children safely to their parents without distraction.

## Asda 'cashpot' rewards scheme

Please sign up and select Galley Common Infant School to help us raise funds for our outdoor provision enrichment for our children.

As a small village school, we really need your help!

Uniform - Can we please ask parents to ensure that their child's uniform is clearly named and ensure that they are going home in the correct clothing.

Pupil Premium Funding - Please follow this link and fill in a short form to see if your child(ren) are eligible. [LINK](#)

If you need support completing the form, please contact the school office.

Please do not delay - fill in the form today!

**you scan,  
we donate  
££s TO  
SCHOOLS.**



### *Our School Rules*

1. Listen Carefully

2. Take Care

3. Try your best



Our school has once again signed up to the Safe and Active Schools Programme 2024-2025. As part of the programme all children will be receiving age-appropriate road safety sessions, and we will also be participating in and promoting active travel.

Last year we achieved a bronze / silver / gold award. This year we are going to be working towards our bronze / silver / gold / platinum award. (Delete as required)

We recognise how important messaging is for our children. Your children copy your actions, and your behaviour serves as a powerful role model. We would like to ask all our families to model the safest behaviours near the road for children to copy and make good choices around travelling actively on the school run.

We will be sharing messages and ideas from the Safe and Active Schools team and further information about the children's road safety learning in school throughout the year.

For further information about road safety and active travel you can follow or contact the road safety education team.

X (previously Twitter) - [@WCCSafe\\_Active](#)

Facebook - [@WCCSafeActiveTravel](#)

Email - [roadsafetyeducation@warwickshire.gov.uk](mailto:roadsafetyeducation@warwickshire.gov.uk)





# OPEN DAY

At  
**GALLEY COMMON INFANT SCHOOL**

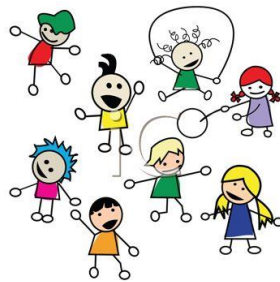
**Thursday 26<sup>th</sup> September 2024**

**9:30am or 1:30pm**

**By appointment only\***

**Please contact the school for further details and to book a tour.**

## PROSPECTIVE PARENTS SEPTEMBER 2025



**Please come along and find out more about our school.  
Our contact details are below...**

**Galley Common School**  
Plough Hill Road, Nuneaton, Warwickshire, CV10 9NZ  
Telephone: 02476 392219  
E-mail [Admin2107@welearn365.com](mailto:Admin2107@welearn365.com)  
<http://www.galleycommoninfschool.co.uk/>

***\*To avoid disappointment, it is important that you contact the school to book your visit as we will only be accepting those visitors who have pre-booked a tour.***



## School Uniform



At Galley Common Infant School, we take pride in our school uniform. Unfortunately, we have started to notice that a few things are being introduced that are not school uniform.

Below are just a few reminders about our school uniform expectations.

**Ankle boots** should not be worn. The correct school uniform requirement is that children should wear sensible **black shoes**.

**Jewellery** other than stud earrings is not allowed. Children who do wear stud earrings must tape these up or remove them on PE days.

**Nail polish** should not be worn by children at school. Could you please ensure that all nail polish is removed before coming to school.

**Tattoos** - Please ensure tattoos are removed for school.

**Toys in School** - Please do not allow your child to bring in any toys to school, unless permission has been given by a member of staff.

On PE days children should wear a black tracksuit and yellow PE shirt during the winter months and in the summer months blue shorts and a yellow shirt should be worn.

We do hope that you will support us by ensuring that your child continues to wear the appropriate school uniform.

**ILLNESS** - If your child is ill and not able to come to school, please telephone the school office by 10.00am to give a reason for their absence. If we do not hear from you by 10.00am, Miss Doherty will be ringing you to find out why your child is absent.

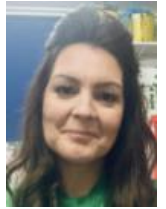
If your child is sick or has had diarrhoea, they should **NOT** come back into school, until they have been clear for **48 hours**.

Please **send a note** with your child when they return to school, explaining their absence. Thank you.

## SAFEGUARDING

**"The safety of the child is the first and paramount consideration"**

**Child protection concerns** - If you have any child protection concerns, or wish to raise any issues, please feel free to call into school and speak to Mrs Middleton, Mrs Newman, or Mrs Salmon. You can also email [safeguarding2107@welearn365.com](mailto:safeguarding2107@welearn365.com) You can also speak to a member of the Social Care Emergency Duty Team on 01926 886922.



### **The Highway Code / School Keep Clear Signs / Zig-Zags/ Double Yellow Lines:**

Warwickshire Road Safety Partnership would like to remind parents of The Highway Code. The Highway Code states: "You **MUST NOT** wait or park, or stop to set down and pick up passengers, on school entrance markings." (Highway Code rule 238, Road Traffic Regulation Act 1984.)

School Keep Clear markings mean no stopping during the time and days specified on adjacent or nearby signs. The markings help prevent vehicles from parking near or in front of school entrances, to ensure safe access for children and parents.

**Please park safely, legally and considerately and away from the school gates.**

**Packed Lunches** - as a parent/carer you play an important role in setting an example and teaching your children from a young age about choosing healthy food and drink. This will help them to have a nutritious diet that meets their growing needs and help to make sure they continue to eat healthily as they get older. It is important children are eating the right amount of food for their age. Young children need small portions of food whereas older children need larger amounts.



# Weekly Menu



A vegan meal is available on request on days when (vg) is not shown as a choice on the menu.

All our fish is natural whole fillet and although great care has been taken to remove all bones, some may remain.

## Week one

Warwickshire, Coventry: 169, 710, 1811, 912, 131/25, 3/2, 3/3, 24/3  
Oxfordshire: 169, 710, 1811, 912, 131/25, 3/2, 3/3, 24/3

### MONDAY

Choose a main meal...  
Pork Meatballs in Tomato Sauce with Noodles (G,E)  
(vg) Breaded Vegetable Fingers with Herby Diced Potatoes (G)

On the side...  
Fresh Salad Bar  
Vegetables of the Day  
For dessert...  
(vg) (h) Lemon Shortbread (G)  
(v) Cheese Crackers and Apple Wedge (G,D)  
Fresh Fruit

### TUESDAY

Choose a main meal...  
(h) Chicken and Country Vegetable Pie with Potato Wedges (G)

On the side...  
Fresh Salad Bar  
Vegetables of the Day  
For dessert...  
(v) Cheese and Tomato Pizza Wedge with Potato Wedges (G,D)  
Jacket Potato - (v) Cheese (D), Tuna (F,E) or (v) Baked Beans

### WEDNESDAY

Choose a main meal... **WEDNESDAY ROAST**  
British Roast Beef, with Traditional Yorkshire Pudding and Gravy (D,E,G)

On the side...  
Fresh Salad Bar  
Vegetables of the Day  
For dessert...  
(vg) Quorn Roast in Gravy with (v) Yorkshire Pudding (D,E,G)  
Crispy Roast Potatoes  
Jacket Potato - (v) Cheese (D), Tuna (F,E) or (v) Baked Beans

### THURSDAY

Choose a main meal...  
Chicken Fillet Wrap and Sweetcorn Salata Dip with Diced Potatoes (G)

On the side...  
Fresh Salad Bar  
Vegetables of the Day  
For dessert...  
(v) (h) Mac 'n' cheese with Freshly Baked Crusty Bread (D,G)  
Jacket Potato - (v) Cheese (D), Tuna (F,E) or (v) Baked Beans

### FRIDAY

Choose a main meal... **FRIDAY FRIDAY**  
(misc) Battered Fish Fillet (G,F) with Chipped Potatoes

On the side...  
Fresh Salad Bar  
Peas or Baked Beans  
For dessert...  
(vg) Vegetarian Hotdog with Chipped Potatoes (G)  
Jacket Potato - (v) Cheese (D), Tuna (F,E) or (v) Baked Beans  
(v) Yoghurt (D) or Fresh Fruit

## Week two

Warwickshire, Coventry: 29, 239, 1410, 411, 2511, 1612, 20125, 102, 103, 313  
Oxfordshire: 29, 239, 1410, 411, 2511, 1612, 20125, 102, 103, 313

### MONDAY

Choose a main meal...  
British Pork Sausages with Gravy & Mashed Potatoes (G,SU,SB)

On the side...  
Fresh Salad Bar  
Vegetables of the Day  
For dessert...  
(vg) (h) Flapjack (G)  
(v) Yoghurt (D) or Fresh Fruit

### TUESDAY

Choose a main meal...  
(h) British Beef Bolognese with Garlic Bread (G, cheese D)

On the side...  
Fresh Salad Bar  
Vegetables of the Day  
For dessert...  
(vg) Veggie Plant burger in a High Fibre Bun with Crispy Diced Potatoes (G)  
Jacket Potato - (v) Cheese (D), Tuna (F,E) or (v) Baked Beans

### WEDNESDAY

Choose a main meal... **WEDNESDAY ROAST**  
British Roast Chicken, Fillet, Sage and Onion Stuffing and Gravy (G)

On the side...  
Fresh Salad Bar  
Vegetables of the Day  
For dessert...  
(vg) Quorn Roast in Gravy with Sage and Onion Stuffing (G)  
Crispy Roast Potatoes  
Jacket Potato - (v) Cheese (D), Tuna (F,E) or (v) Baked Beans

### THURSDAY

Choose a main meal...  
(h) Italian Chicken Pasta (chicken and pasta in a tomato sauce) with Freshly Baked Wholegrain Baguette (G)

On the side...  
Fresh Salad Bar  
Vegetables of the Day  
For dessert...  
(vg) Veggie Sausage with Herby Diced Potatoes  
Jacket Potato - (v) Cheese (D), Tuna (F,E) or (v) Baked Beans

### FRIDAY

Choose a main meal... **FRIDAY FRIDAY**  
(misc) Salmon Fish Cake with Chipped Potatoes (G,F)

On the side...  
Fresh Salad Bar  
Peas or Baked Beans  
For dessert...  
(v) (h) Rustic Pizza Wedge with Chipped Potatoes (G,D,SB)  
Jacket Potato - (v) Cheese (D), Tuna (F,E) or (v) Baked Beans  
(v) (h) Ginger Cookie (G)  
(vg) Jelly with Fruit  
(v) Yoghurt (D) or Fresh Fruit

## Week three

Warwickshire, Coventry: 99, 309, 2110, 1111, 212, 81125, 271, 242, 1713, 714  
Oxfordshire: 99, 309, 2110, 1111, 212, 81125, 271, 242, 1713, 714

### MONDAY

Choose a main meal...  
Southern Style Chicken Strips in a Wrap with Potato Wedges (G)

On the side...  
Fresh Salad Bar  
Vegetables of the Day  
For dessert...  
(v) (h) Chocolate Orange Cookie with Orange Wedges (G)  
(v) Yoghurt (D) or Fresh Fruit

### TUESDAY

Choose a main meal...  
Beef Burger in a High Fibre Bun with Crispy Diced Potatoes (G,SB,SU)

On the side...  
Fresh Salad Bar  
Vegetables of the Day  
For dessert...  
(h) (v) Cheesy Tomato Pasta Bake with Freshly Baked Wholegrain Baguette (D,G)  
Jacket Potato - (v) Cheese (D), Tuna (F,E) or (v) Baked Beans

### WEDNESDAY

Choose a main meal... **WEDNESDAY ROAST**  
British Roast Pork Loin, Apple Sauce and Gravy

On the side...  
Fresh Salad Bar  
Vegetables of the Day  
For dessert...  
(vg) Quorn Roast with Gravy (G)  
Crispy Roast Potatoes  
Jacket Potato - (v) Cheese (D), Tuna (F,E) or (v) Baked Beans

### THURSDAY

Choose a main meal...  
(h) Mild and Creamy Chicken Korma with Wholegrain rice (D)

On the side...  
Fresh Salad Bar  
Vegetables of the Day  
For dessert...  
(vg) Quorn Dippers with Seasoned Wedges (G)  
Jacket Potato - (v) Cheese (D), Tuna (F,E) or (v) Baked Beans

### FRIDAY

Choose a main meal... **FRIDAY FRIDAY**  
(misc) Fish Fillet Fingers (G,F) with Chipped Potatoes

On the side...  
Fresh Salad Bar  
Peas or Baked Beans  
For dessert...  
(v) Plantain Melt with Chipped Potatoes prepared in a finger-ful inspired with rustic tomato sauce and grated cheese (G,D)  
Jacket Potato - (v) Cheese (D), Tuna (F,E) or (v) Baked Beans  
(v) (h) School Favourite Sprinkles Sponge Cake (G,E)  
(v) Yoghurt (D) or Fresh Fruit

Fruit Cordial or Fruit Water from the Hydration Station, Semi Skimmed Milk & Fresh Bread are also offered daily



**ALLERGEN KEY**  
F = Fish  
D = Dairy  
M = Mustard  
S = Sesame  
E = Eggs  
G = Gluten  
W = Wheat  
Vg = Vegan  
C = Celery  
L = Lupine  
H = Molluscs

**Allergies**  
Please contact your school canteen for information regarding the content of dishes and products on our menu.

go on an Autumn  
nature scavenger hunt



roll acorns or  
conkers in paint  
on paper



print pictures  
with leaves



make and play  
with Autumn  
spice play dough

## Autumn play & art ideas



@imaginationtree



wrap pine cones  
in colourful yarn

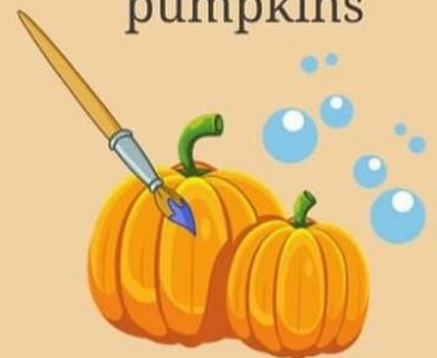
build a den and  
read books inside



mix nature  
soup in the  
mud kitchen



paint and wash  
pumpkins





**Tuesday 17 September 2024**

This week's Family Information Service newsletter includes information about:

- Gas Safety Week
- Young Poet Laureate
- Entrust Care Partnership 'Wizard of Oz' workshops

and much more!

The Family Information Service (FIS) supports families across Warwickshire with information and signposting. You can get in touch with the team by emailing [fis@warwickshire.gov.uk](mailto:fis@warwickshire.gov.uk), calling [0800 408 1558](tel:08004081558) or finding support on [www.warwickshire.gov.uk/childrenandfamilies](http://www.warwickshire.gov.uk/childrenandfamilies).

If you would like to know more about FIS and where to find information and support on the FIS and SEND Local Offer webpages, book a place on an [online FIS discovery session](#).

**LEARNING IMPROVEMENT PRIORITIES  
2024/2025**

KEY PRIORITIES	PRIORITY
<b>PRIORITY 1.</b>	Continue to meet the social and emotional wellbeing needs of all of our children, including meeting the needs of our Special Educational Needs children.
<b>PRIORITY 2.</b>	Improve the writing practice and progress so that most children meet or exceed the expected standard for the age. Embed the Jo Considine The Write Stuff approach to enhance the writing planning so that all learners, including Greater Depth writers reach their full potential.
<b>PRIORITY 3.</b>	To re-establish a whole school culture where behaviour, routines and expectations are implemented positively and consistently, reducing incidents of low-level behaviours
<b>PRIORITY 4</b>	Further develop maths teaching, training and delivery so that children reach their full potential in maths including those working at greater depth.

## Free School Meals

Schools should provide meal options for all children attending school. Meals are available free of charge to:

- All infant pupils (reception, year 1 and year 2) - known as universal FSM
- Pupils who meet the free school meals [eligibility criteria](#) - known as benefits - related FSM

If your child is in reception, year 1 or year 2, they will automatically be entitled to universal infant free school meals. However, if you do meet the benefits - related free school meals eligibility criteria, then it is advised you apply to receive additional benefits:

- [Holiday activities and food \(HAF\)](#) programme is for children aged 4 to 16, in reception to year 11, in receipt of benefits-related free school meals. HAF offers eligible pupil's access to activities and at least one healthy meal is provided during each session. The activities take place during the Easter, summer, and Christmas school holidays.
- [Pupil premium](#) is extra funding paid directly to schools for each pupil who is eligible for free school meals. It can help to fund valuable teaching and learning support to improve pupil's education.

You can apply for benefits-related FSM at any time online by clicking the following link:

<https://www.warwickshire.gov.uk/education-learning/apply-free-school-meals>

If you have any questions or need support with applying, please contact the team by emailing [freemeals@warwickshire.gov.uk](mailto:freemeals@warwickshire.gov.uk) or calling 01926 359189.



## Car Parking

This is a polite request to ask all parents who need to drive to school to remember to park considerately and safely at school drop off and collection. Please park with care and help make the area near and around our school a safer place for our children. Parking away from school will also help keep congestion to a minimum and maintain a good relationship with our neighbours.

There is car park available opposite the school site, and the Community Church.

We all want to help keep our children safe - please take some time to read and remember Warwickshire County Councils road safety code for parents:

- Park away from school gates
- Always hold hands with young children
- Remember - your child will copy you
- Every road means STOP LOOK LISTEN
- Never get children out of a car roadside
- Think safer places to cross the road
- Secure your child's car seat correctly

Let's all work together to keep all our children safe outside school.

## LEAVE OF ABSENCE DURING TERM TIME UPDATED INFORMATION FOR PARENTS

The Supreme Court recently reached a decision in the case of *Platt v Isle of Wight Council* which has clarified the law on unauthorised leave, including holidays, during term time. The parents of children of compulsory school age are required to ensure that they attend school on a regular basis. The Supreme Court has made clear that attending school 'regularly' means that the children must attend school on every day that they are required to do so. As such, the parents of any child who is absent from school without authorisation for any length of time are likely to be considered as committing an offence under s444 of the Education Act 1996.

Head Teachers retain the ability to authorise leave in accordance with the Education (Pupil Registration) (England) Regulations 2006. When considering such requests for a leave of absence, the school are obliged to act within the law. Head Teachers may not grant any leave of absence during term time unless there are exceptional circumstances relating to the application. If the leave is granted, head teachers are able to determine the number of school days a child can be absent for.

It is for the Head Teacher to decide what is 'exceptional' and it is at their discretion if the circumstances warrant the leave to be granted. The school can only consider Leave of Absence requests which are made by the 'resident' parent.

*Each application for a leave of absence will be considered on a case by case basis and on its own merits.*

Where applications for leave of absence are made in advance and refused, the child will be required to be in school on the dates set out in the application. If the child is absent during that period, it will be recorded as an unauthorised absence.

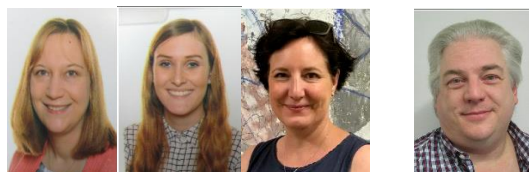
Failure to make an application for leave in advance will result in the absence being recorded as an unauthorised absence.

**Your child's progress academically as well as socially is our shared priority**



### GOVERNORS

**Please meet our Governors** – If you need to contact the Chair of Governors, Mr John Price, please contact Mrs Arkinstall in the school office on 02476 392219 or [admin2107@welearn365.com](mailto:admin2107@welearn365.com)



Mr J Price - Chair of Governors  
Mrs K Middleton - Head Teacher  
Mrs Gordon - Staff Governor  
Mrs C Paremain - Co-opted Governor  
Mrs K Gilbert - Co-opted Governor  
Mr J Parr - Co-opted Governor  
Mr R Scott - Parent Governor  
Mr C Joyce - Parent Governor  
Vacancy - Co-opted Governor



Save the dates!

Together with Autism Conferences 2024

FREE Events

For professionals, parents and carers of autistic children, autistic adults and for anybody wanting to better understand autism.

Great news! act for autism have partnered with Coventry and Warwickshire Integrated Care System to bring you three conferences covering all things autism.

Leamington 29th June

Coventry 14th September

Nuneaton 9th November

Come along to hear great talks, attend dynamic workshops, meet the services and talk to others about their experiences of autism.

Free to attend. Bookings will open six weeks before each event.

9.45am - 4.00pm More details to follow

In partnership with



For queries and information: info@actforautism.co.uk

Facebook, Instagram, Twitter handles for actforautism

# Warwickshire Fire & Rescue Service

## BONFIRE NIGHT COMPETITION 2024

WFRS invite you to design an original safety poster for Bonfire night

Your poster needs to be:

A4 size

Colourful and eye-catching

Giving safety advice to follow on Bonfire night

Name, age and school on back

A winner will be chosen from KS1, KS2, and KS3

Winners will receive a goody bag and have their poster design displayed in Warwickshire Fire Stations, on our social media posts and in schools across the County

CLOSING DATE FRIDAY 18TH OCTOBER

Please send all entries to:

Sara Beirne

Bedworth Fire Station

Park Road

Bedworth

CV12 8LB

or email entries to:

sarabeirne@warwickshire.gov.uk

GOOD LUCK!



WARWICKSHIRE FIRE & RESCUE SERVICE



# FUN FOR FAMILIES

Sat 26th October 10am-11.15am

Crowne Plaza Hotel

The Enchanted Cinema £10 (adults £5) | Age 4+



Imagine going to the cinema and becoming part of a pop-up orchestra that creates every single sound effect and the musical score!



Sat 26th October 2pm

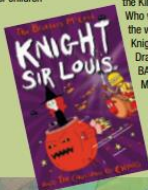
Crowne Plaza Hotel

The Brothers McLeod Knight Sir Louis and the Cauldron of Chaos £8 (adults £5) | Age 8+



Get ready to laugh your socks off at the fifth Knight Sir Louis adventure! A powerful magical object has been rediscovered: the Cauldron of Chaos.

Who will rescue the land from the witch's dodgy deals? Knight Sir Louis, of course! Draw along with the BAFTA-winning Brothers McLeod, Greg and Myles.



Sun 27th October 9.30am

Crowne Plaza Hotel

Julie Tatchell and Amanda Middleditch Bartie Bristle and Other Stories £8 (adults £5) | Age 3+



Step into the magical world of Bartie Bristle and friends in this stunning treasury written by the Teddy Bear Ladies, Julie Tatchell and Amanda Middleditch, best known as stars of the BBC's The Repair Shop.



Sun 27th October 10.15am-11.15am

Crowne Plaza Hotel

Christopher Edge Black Hole Cinema Club £8 (adults £5) | Age 8+



We welcome the award-winning author of Escape Room with another edge-of-your-seat adventure. When Lucas meets his friends at the local cinema - nicknamed 'The Black Hole' - they're excited about the movie marathon ahead.

Sun 27th October 2pm - 4pm

Crowne Plaza Hotel

Halloween Craft with Becci Books £8 (adults Free) | Age 4-7



It's time for spooktacular Halloween craft, with pumpkins and ghosties galore! Make flying bats and witches' hats, with pom poms, pipe cleaners and more...



www.galleycommoninfschool.co.uk

Box Office: 0333 666 3366 or online at stratlitfest.co.uk